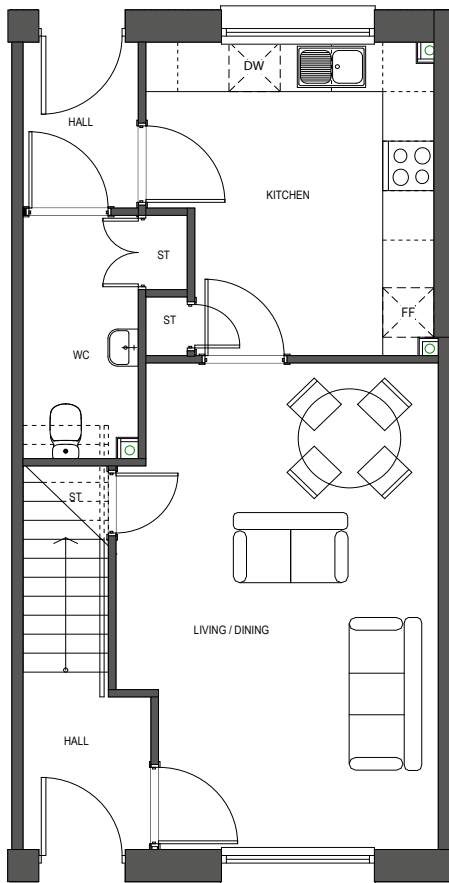




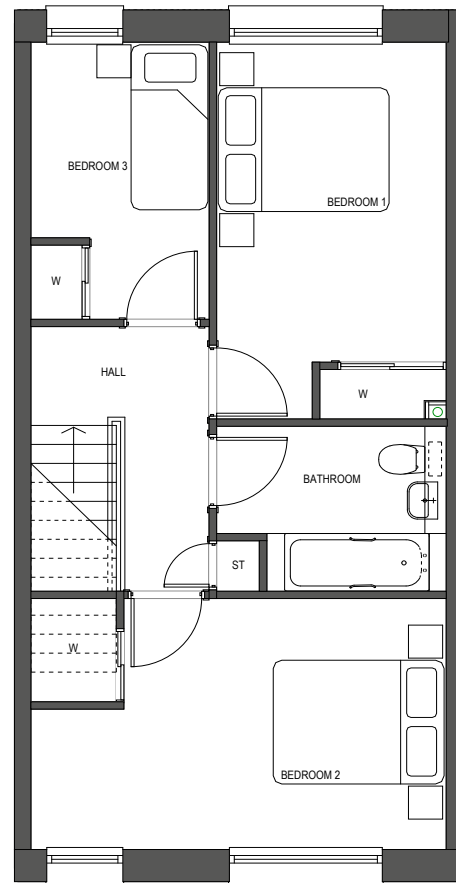
Image is for illustration purposes only

House Type 2

3 Bedroom House



Ground Floor



First Floor

House Type 2

Specification

KITCHEN

Fully fitted stylish kitchen featuring soft close mechanisms.
White goods package
Laminate worktop with upstand
1.5 bowl sink

BATHROOM & EN-SUITES

Ideal Standard Sanitaryware
Vado taps
Tiling by CTD

WARDROBES

Contemporary sliding wardrobe doors

DECORATION

Internal walls and ceilings will be finished in matt white emulsion
Contemporary stylish internal doors with chrome effect handles
White switches and sockets to all public areas
NorDan double glazed windows

PLUMBING & HEATING

Gas central heating

ELECTRICAL

Ample power points throughout
TV and Telephone points provided
Downlighters to kitchen, bathroom and en-suite areas
TV point in lounge and master bedroom

EXTERNAL

Turf to garden
Insulated part glazed front door
Solar panels

Dimensions

LIVING/DINING	5.9m x 3.8m - 19'4" x 12'5"
KITCHEN	3.8m x 3.4m - 12'5" x 11'0"
WC	2.9m x 1.3m - 9'6" x 4'3"
BEDROOM 1	4.6m x 2.7m - 15'1" x 8'9"
BEDROOM 2	4.9m x 3.0m - 16'0" x 9'9"
BEDROOM 3	3.4m x 2.1m - 11'2" x 6'9"
BATHROOM	2.7m x 2.0m - 8'9" x 6'6"

NB. ALL ROOM SIZES ARE APPROXIMATE

Location of House Type 2



Plots

Plot B3_2	Plot E1_5	Plot F1_2
Plot B3_3	Plot E1_11	Plot F1_4
Plot B3_4	Plot E1_13	Plot F1_6
Plot B3_12	Plot E2_3	Plot F1_8
Plot B3_13	Plot E2_5	Plot F1_10
Plot B3_14	Plot E2_11	Plot F1_12
Plot E1_3	Plot E2_13	Plot F1_14

**CONSUMER
CODE FOR
HOME BUILDERS**

www.consumercode.co.uk