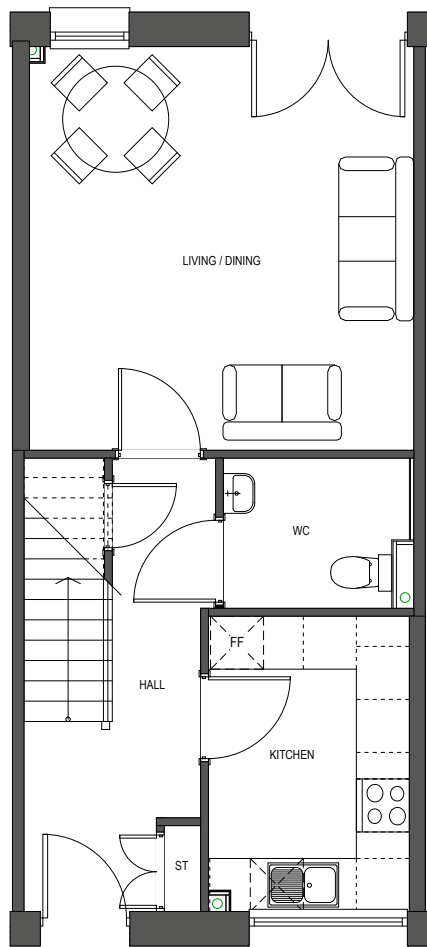




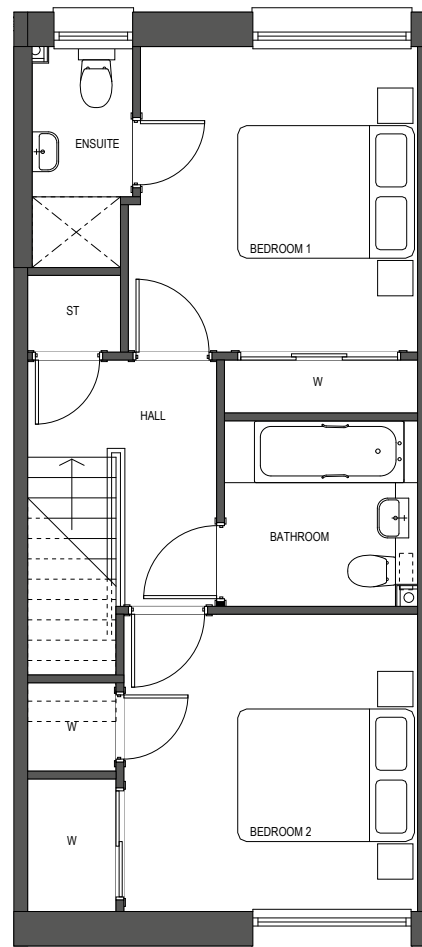
Image is for illustration purposes only

House Type 4

2 Bedroom House



Ground Floor



First Floor

House Type 4

Specification

KITCHEN

Fully fitted stylish kitchen featuring soft close mechanisms.
White goods package
Laminate worktop with upstand
1.5 bowl sink

BATHROOM & EN-SUITES

Ideal Standard Sanitaryware
Vado taps
Tiling by CTD

WARDROBES

Contemporary sliding wardrobe doors

DECORATION

Internal walls and ceilings will be finished in matt white emulsion
Contemporary stylish internal doors with chrome effect handles
White switches and sockets to all public areas
NorDan double glazed windows

PLUMBING & HEATING

Gas central heating

ELECTRICAL

Ample power points throughout
TV and Telephone points provided
Downlighters to kitchen, bathroom and en-suite areas
TV point in lounge and master bedroom

EXTERNAL

Turf to garden
Insulated part glazed front door
Solar panels

Dimensions

LIVING/DINING	4.6m x 4.4m - 15'1" x 14'4"
KITCHEN	3.3m x 2.3m - 10'9" x 7'6"
WC	2.2m x 1.7m - 7'2" x 5'6"
BEDROOM 1	3.5m x 3.3m - 11'5" x 10'9"
EN-SUITE	2.5m x 1.1m - 8'2" x 3'7"
BEDROOM 2	3.3m x 3.4m - 10'9" x 11'2"
BATHROOM	2.2m x 2.1m - 7'2" x 6'9"

NB. ALL ROOM SIZES ARE APPROXIMATE

Location of House Type 4



Plots

Plot B3_5	Plot E1_4	Plot F1_5
Plot B3_6	Plot E1_6	Plot F1_7
Plot B3_7	Plot E1_12	Plot F1_9
Plot B3_8	Plot E2_4	Plot F1_11
Plot B3_9	Plot E2_6	Plot F1_13
Plot B3_10	Plot E2_12	Plot F1_15
Plot B3_11	Plot F1_3	